

### Starting the Instrument

Remove the T100 thermal cycler from the box and plug it in. Turn on the power switch on the back of the instrument. The T100 cycler will perform a quick self-test and then display the Home screen (Figure 1).

### Setting the Date and Time

First make sure the system clock is correct for your time zone so that all runs are accurately recorded in the run log.

1. In the Home screen, touch **Tools** and then **Settings** to display the instrument settings menu (Figure 2).
2. Touch the fields for Month, Day, Year, Hours, and Minutes and edit the values using the pop-up keypad.
3. Touch **Save** to save the changes.
4. Touch **Home** to return to the Home screen.

### Creating a New Protocol

1. To create a new protocol, touch **New Protocol** in the Home screen.
2. The New Protocol screen displays a graphical view of the protocol (Figure 3). Edit the value of any of the following parameters by touching the corresponding field:
  - Temperature
  - Hold time
  - Number of repeats in the GOTO loop
  - Starting step for the GOTO loop
  - Sample volume
  - Lid temperature
3. To select a step, touch anywhere outside the temperature box. The step becomes highlighted to indicate that it is selected. Once a step is selected, you can insert a new step after the selected step, delete the selected step, or configure the options for the step.



Fig. 1. T100 thermal cycler Home screen.

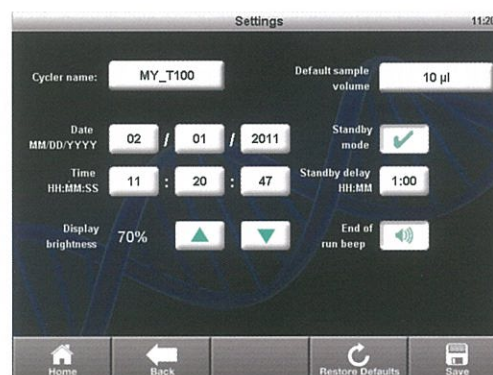


Fig. 2. Settings screen.

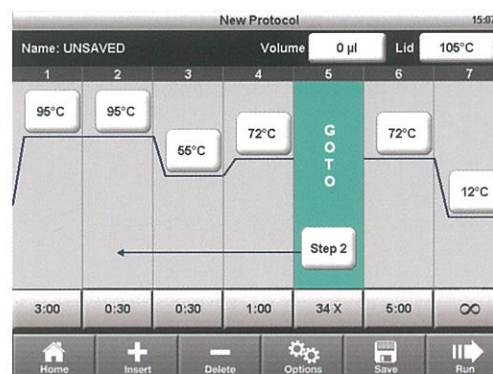


Fig. 3. New Protocol screen showing graphical view of a protocol.

- To insert a step, touch **Insert**. The screen will display the type of steps to insert (Figure 4). Select **Temperature** for a temperature hold step, **Gradient** for a thermal gradient for protocol optimization, or **GOTO** to insert a GOTO step that will loop back to repeat the specified steps in your protocol (typically denaturation, annealing, and extension).
- To delete a step, select the step and touch **Delete**.
- To configure advanced parameters for a step, such as Temperature, Increment, Time, Extend, Gradient, and Ramp rate, select a step and touch **Options** (Figure 5). Program the required parameters as needed.
- Touch **Save** to select a folder location and save the protocol.
- Touch **Run** to start the protocol. You can also run a protocol without saving it by touching **Run** at any time while editing.

### Running and Editing a Saved Protocol

- In the Home screen, touch **Saved Protocols**. The T100 cycler organizes all the protocols into folders. A preinstalled library of standard protocols is in the MAIN folder (Figure 6).
- Select a folder from the Folders column, then select a protocol file from the Files column.
- Review the selected protocol using the Preview column on the right.
- Touch **Run** to start the run or touch **Edit** to edit the protocol.

Purchase of this instrument conveys a limited non-transferable immunity from suit for the purchaser's own internal research and development and for use in human in vitro diagnostics and all other applied fields under one or more of U.S. Patent Numbers 5,656,493; 5,333,675; 5,475,610 (Claims 1, 44, 158, 160-163, and 167 only); and 6,703,236 (Claims 1-7 only), or corresponding claims in their non-U.S. counterparts, owned by Applied Biosystems. No right is conveyed expressly, by implication or by estoppel under any other patent claim, such as claims to apparatus, reagents, kits, or methods such as 5' nuclease methods. Further information on purchasing licenses may be obtained by contacting the Director of Licensing, Applied Biosystems, 850 Lincoln Centre Drive, Foster City, California 94404, USA.

This product is covered by one or more of the following U.S. patents or their foreign counterparts owned by Eppendorf AG: U.S. Patent Numbers 6,767,512 and 7,074,367.



Fig. 4. Insert step window.



Fig. 5. Options window showing advanced parameters.

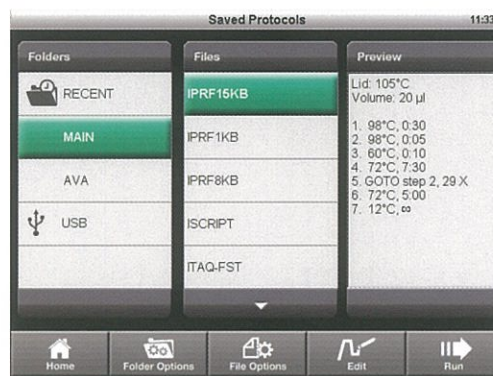


Fig. 6. Saved Protocols screen showing the preinstalled library of standard protocols in the MAIN folder.



**Bio-Rad**  
Laboratories, Inc.



Life Science  
Group

Web site [www.bio-rad.com](http://www.bio-rad.com) USA 800 424 6723 Australia 61 2 9914 2800 Austria 01 877 89 01 Belgium 09 385 55 11 Brazil 55 31 3689 6600  
Canada 905 364 3435 China 86 21 6169 8500 Czech Republic 420 241 430 532 Denmark 44 52 10 00 Finland 09 804 22 00  
France 01 47 95 69 65 Germany 089 31 884 0 Greece 30 210 777 4396 Hong Kong 852 2789 3300 Hungary 36 1 459 6100 India 91 124 4029300  
Israel 03 963 6050 Italy 39 02 216091 Japan 03 6361 7000 Korea 82 2 3473 4460 Malaysia 60 3 2117 5260 Mexico 52 555 488 7670  
The Netherlands 0318 540666 New Zealand 64 9 415 2280 Norway 23 38 41 30 Poland 48 22 331 99 99 Portugal 351 21 472 7700  
Russia 7 495 721 14 04 Singapore 65 6415 3170 South Africa 27 861 246 723 Spain 34 91 590 5200 Sweden 08 555 12700  
Switzerland 061 717 95 55 Taiwan 886 2 2578 7189 Thailand 66 2 6518311 United Kingdom 020 8328 2000